

KAW TAY WHEE SCHOOL

THE COMMUNITY SCHOOL OF DETTAH



KAW TAY WHEE SCHOOL
BOX 40
YELLOWKNIFE, NT
X1A-2K1
873-4303

We're Growing!

Welcome back to another exciting year of learning at Kaw Tay Whee School!

The staff is very excited about the upcoming year, and is very much looking forward to working with the children to help them be the best learners and citizens they can be!

We are delighted to welcome some new students to our pre-school and

school this year, and know that they will fit right in, and learn to love KTW as much as we do! Enrollment is growing!

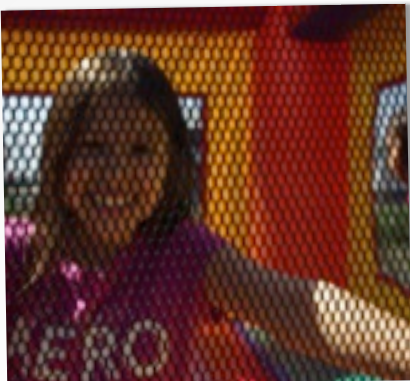
We are also very happy to welcome back all of our staff and DEA members from last year.

This consistency will help us continue to put our students first, and increase their academic achievement.

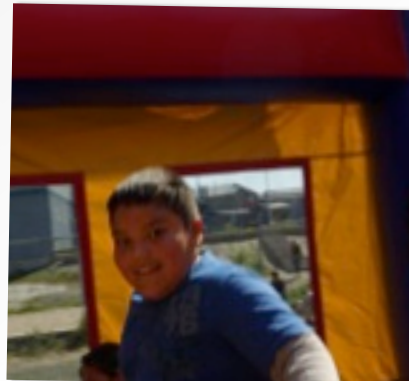
As always, please remember that our door is open! Please free to call or stop by.

We thank you for your continued support, and truly look forward to working with you this year.

Lea Lamoureux, Principal, on behalf of the KTW Staff



IN THE CASTLE



"CAN YOU SEE ME?"



WORKING ON FISH

JUNE 2011



HERE ARE SOME PHOTOS FROM JUNE OF LAST YEAR!

THE KAW TAY WHEE SUPER SURPRISE WAS A GREAT SUCCESS! AS WAS THE KTW SUPER DUPER RAZZLE DAZZLE SHOW!

THANKS TO ALL PARENTS, DDEA MEMBERS, AND COMMUNITY MEMBERS FOR COMING OUT TO SHOW SUPPORT FOR OUR STUDENTS AND OUR SCHOOL!

On Time By Nine

On Time By Nine is back, by popular demand!

Here's how it works:

Students must be on time by nine for a certain number of days in a row, then are invited to a special recognition event.

The details for September are:

Event 1 "Fantastic Fairy Cake Fiesta"

Arrive OTBN on the 6th, 7th, and 8th to attend the event at 3:20 on the 8th.

Event 2 "Wii and Popcorn Party"

Arrive OTBN on Sept 9th, 12th, 13th, 14th to attend the event at 3:20 on the 14th.

Event 3 "Gold Glitter Gala"

Arrive OTBN on the 15th, 16th, 19th, 20th, and 21st to attend the event on the 21st.

Event 4 "Lively Lego Bash"

Arrive OTBN on the 22nd, 23rd, 26th, 27th, 28th, and 29th to attend the event on the 29th at 3:20.

AT-HOME

READING PROGRAM

HOMEWORK--KTW STYLE!

At Kaw Tay Whee School, we believe in the power of reading- every day!

Students from kindergarten to grade six are expected to read with an adult at home on a nightly basis.

Please help your child(ren) succeed by reading with them each night, talking briefly about the book, and signing their reading log.

The children are excited to show what they know!

We thank you for your continued support in this vital initiative!



PRE-SCHOOL

With Sally Drygeese

WELCOME TO PRE-SCHOOL! LOTS OF EXCITING THINGS ARE PLANNED FOR THIS YEAR!

WELCOME TO OUR NEW STUDENTS.

WE ARE GOING TO HAVE A FUN YEAR OF PLAYING AND LEARNING TOGETHER!



MR PENNEY'S K-3 CLASS

I AM LOOKING FORWARD TO TEACHING A NEW GRADE THIS YEAR, AS OUR CLASS NOW GOES FROM K-3! WE ALSO HAVE SOME NEW TO KTW STUDENTS!

WE WILL BE DOING MANY INTERESTING THINGS THIS YEAR- COME BY AND SEE HOW MUCH OUR GARDEN HAS GROWN OVER THE SUMMER!



MISS MESSENGER'S 3-6 CLASS

I WELCOME SOME NEW STUDENTS TO MY CLASS THIS YEAR!

WE WILL BE HAVING A BUSY YEAR OF LEARNING, AND I LOOK FORWARD TO WORKING WITH ALL OF THE CHILDREN TO HELP THEM DO THEIR BEST!

**TOP 5 WAYS TO HELP YOUR CHILD
SUCCEED AT SCHOOL THIS YEAR**

1. HELP THEM ARRIVE ON TIME BY NINE EVERY DAY!
2. HELP THEM REMEMBER TO GO TO BED EARLY AT NIGHT.
3. READ WITH THEM EACH EVENING! THIS WILL MAKE A HUGE IMPACT ON THEIR LEARNING!
4. GET TO KNOW YOUR CHILD'S TEACHERS AND OTHER SCHOOL STAFF.
5. COME TO SCHOOL EVENTS AND CELEBRATIONS!

Dene
Law of
the month:
Share what you have.

Dene Kede theme of the
month:
Cranberries

A
special
congratulations
to
Miss Messenger
who
got
engaged
over
the
summer!

The Lunch Program at KTW

The Staff of KTW are delighted to provide a nutritious lunch program for our students each day.

We gratefully accept donations of groceries, baked items, cash, or time.

As always, children may bring their own healthy lunch.

Please help us continue making our school and students as healthy as they can be by making sure that your child follows our nutrition guidelines.

The following items are NOT ALLOWED at school for lunch:

- Pizza Pops
- Ichiban Noodles
- Pop, Sunny D, Iced Tea

Also, we encourage parents and caregivers to strongly consider NOT sending items like Lunchables and Chef Boyardi products. The high sodium content in these items is very unhealthy for children (and adults!).

Over the years, we have had tremendous support from our families, and look forward to the same this year. Thank you!