

# KAW TAY WHEEL SCHOOL

THE COMMUNITY SCHOOL OF DETTAH



## Great Start!



We welcome the month of October! And we also welcome our new students Madison and Tristan this month.

We have had a wonderful start to the school year!

We have been busy setting and using learning and behaviour criteria

and collecting evidence of our learning!

Students have participated in Berry Picking, Canoeing, and fish-related activities.

We have been learning words related to our Dene Kede themes and laws of moose, prayer, sharing and helping.

Thank you to the families who have contributed to our food programs this month:

\*Trevor's Mom

\*Tigo's Grandparents

\*Tadeh, Tyshanyah, and Alexis' Parents

We look forward to your continued support this month!

KAW TAY WHEEL SCHOOL

BOX 40

YELLOWKNIFE, NT

X1A-2N1

(P) 867-873-4303

(F) 867-873-4420

[LEA.LAMOUREUX@YK1.NT.CA](mailto:LEA.LAMOUREUX@YK1.NT.CA)

Check us out online at:

[www.ktw.yk1.nt.ca](http://www.ktw.yk1.nt.ca)

### TECHNOLOGY REMINDER

Students are not permitted to bring CELL PHONES or Ipods to school.

We have all technology that students need for their learning at school!

Students who bring these items to school will need a parent or guardian to come and pick the items up.  
Thanks for your

October's Dene Law:  
**HELP EACH OTHER**

October's Dene Kede Theme:  
**PRAYER**

### REMINDERS

There are NO CLASSES on OCTOBER 14- it is Thanksgiving

Students are dismissed at noon on October 25- It is a SIP/PD Day

There are NO CLASSES on November 1

Check out our website and links to our student blogs!

[www.ktw.yk1.nt.ca](http://www.ktw.yk1.nt.ca)



# SEPTEMBER



WE LEARNED LOTS IN SEPTEMBER!!!



# AT-HOME

## READING PROGRAM

### HOMEWORK

#### --KTW STYLE!--

At Kaw Tay Whee School, we believe that parents are children's first teachers. We also believe in the power of reading- every day!

Students from kindergarten to grade seven are expected to read with an adult at home on a nightly basis.

Please help your child(ren) succeed by reading with them each night, talking briefly about the book, and signing their reading log.

The children are excited to show what they know! Please help them each night by providing time and a quiet space.

We thank you for your continued support in this vital initiative!

### KTW

#### PRE-SCHOOL

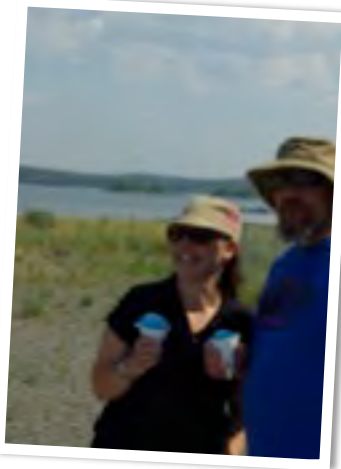
SALLY DRYGEESE IS DELIGHTED TO BE OFFERING AN EXCITING AND INTERESTING PROGRAM FOR 3 AND FOUR YEAR OLD CHILDREN AGAIN THIS YEAR!

THIS COST-FREE PROGRAM RUNS MONDAY TO FRIDAY FROM 8:45-12:00.

CALL OR DROP BY THE SCHOOL FOR REGISTRATION

#### Look at Our Spectacular Staff for 2013-2014!

Custodian- Mrs Shirley Beaulieu  
School Elder- Mrs Mary Louise Drygeese  
Willideh Language- Ms Nora Crookedhand  
Pre-School- Ms Sally Drygeese  
Early Grades- Mrs Dana Merrigan  
Middle Grades- Mr Neil Penney  
Older Grades- Ms Kate Gamble  
Education Assistant- Mrs Debbie Morrison  
Occupational Therapist- Ms Amanda Johnson  
Speech Pathologist- Ms Mallorie Wrightly  
Library- Mrs Trudy Joesse  
Technology- Mr Kevin Laframboise  
Principal- Miss Lea Lamoureux



## HOW CAN YOU HELP YOUR CHILD SUCCEED THIS YEAR?

1. HELP YOUR CHILD ARRIVE ON TIME BY NINE EVERY DAY!
2. HELP YOUR CHILD REMEMBER TO GO TO BED EARLY AT NIGHT.
3. READ WITH YOUR CHILD EACH EVENING! THIS WILL MAKE A HUGE IMPACT ON THEIR LEARNING!
4. GET TO KNOW YOUR CHILD'S TEACHERS AND OTHER SCHOOL STAFF.
5. COME TO SCHOOL EVENTS AND CELEBRATIONS!
6. IF YOU HAVE QUESTIONS OR CONCERNS, SPEAK TO YOUR CHILD'S TEACHER, AS SOON AS POSSIBLE.
7. ASK YOUR CHILD QUESTIONS ABOUT THEIR DAY.

OCTOBER's  
Dene Law:  
**HELP EACH OTHER**

OCTOBER's Dene Kede  
Theme:  
**PRAYER**

Families  
accessing the KTW Lunch Program  
are asked to **contribute** once each term.  
**Donations** of milk, fruit, bannock, meat or fish are  
very welcome and appreciated.  
Thank you for your continued support of our  
fabulously popular lunch program!

### **OTBN News (On Time By Nine)**

On Time By Nine is back, by popular demand!

Here's how it works:

Students must be on time by nine and present for the entire school day for a certain number of days in a row, then are invited to a special recognition event. If students are late or absent, no worries! They can try again for the next event! Remember, extra curricular activities, including open lab are related to on-time attendance at school.

The details for October are:

#### **Event 1 Oct 7 "Smoothies and Snacks"**

Criteria: Arrive OTBN and be at school all day on:

October 1, 2, 3, 4, 7

#### **Event 2 Oct 17 "Wii and Popcorn"**

Criteria: Arrive OTBN and be at school all day on:

October 8, 9, 10, 11, 15, 16, 17

#### **Event 3 Oct 28 "Spooky Surprises"**

Criteria: Arrive OTBN and be at school all day on:

October 18, 21, 22, 23, 24, 25, 28



# Lunch at Kaw Tay Whee School



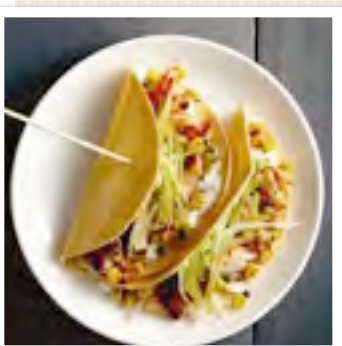
Please read the following outline of lunchtime choices for students and families at Kaw Tay Whee School.

Donations are always welcome!

## CHOICE 1

Students may go home for lunch.

Note: Lunch begins at 12:00 and ends at 12:45. For safety reasons, school staff must be notified by parents or guardians if they choose to send their child home for lunch. Please help your child arrive back at school on time.



## CHOICE 2

Students may bring their own healthy non-heated lunch to school.

Note: The food policy states that in care of student health high sodium/sugar prepared foods, candy and sugar sweetened beverages are not permitted at school. Examples of items not allowed are: pizza pops/rolls/bites, chef boyardee, ichiban noodles, lunch mates/lunchables, pop, iced tea, kool-aid, etc.

Please send items that do not need to be heated. The staff is busy in the kitchen preparing a hot lunch for the school and supervising students. Immediate access to the microwave is not always possible.

Sandwiches, bannock, drymeat, fruit, yogurt and or cheese are quick healthy ideas for lunch.

## CHOICE 3

Students may stay at school and have lunch provided.

Note: The KTW lunch program is an EXTRA program. A cost-free, healthy, from- scratch lunch is provided because staff care about students and their learning. Meals are portion controlled and planned according to Canada's Food Guide.

This program is offered (shopping, cooking, cleaning up) by school staff on a volunteer basis. It should also be noted that for the past five years, students have had on-going input to the school menu.

Families choosing this option should note that students are required to follow the rules, including eating their lunch, and behaving in a manner that is appropriate. Students who do not follow the rules will be sent home for lunch.